

# Master'in Performance P-710 AP

## Semi-automatic pallet stretch wrapper

**MASTER**<sup>in</sup>

### Powered pre-stretch up to 240%

#### Advantages

- + Equipped with a motorized powered pre-stretch 240% film carriage
- + Pallet height black photocell, suitable for black goods as well
- + Belt-driven carriage
- + Simple operation with touch screen
- + Large display with two digits visualize parameters to be adjusted: speed, number of loops, film tension, overwrap, times, top sheets descent level as well as error code display
- + 10 different programs, allowing consistent wrapping cycle for a given product
- + 5 different modes of operation
- + Two forklift access point – for machine easy repositioning
- + Turntable blocking feature to avoid movements during loading/unloading operations

#### Application areas:

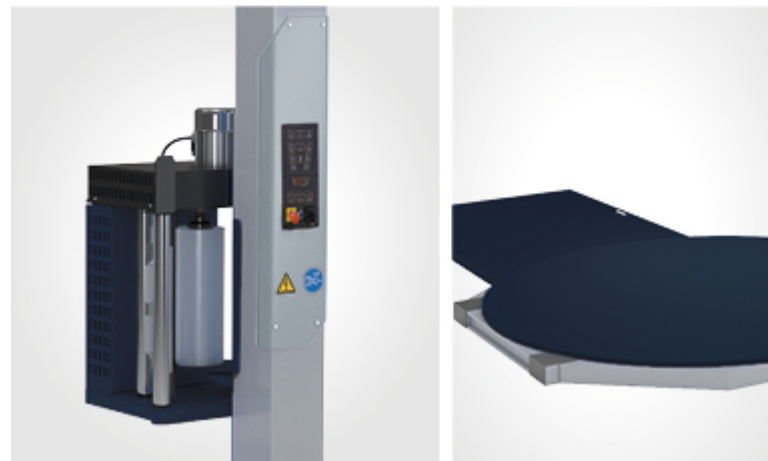
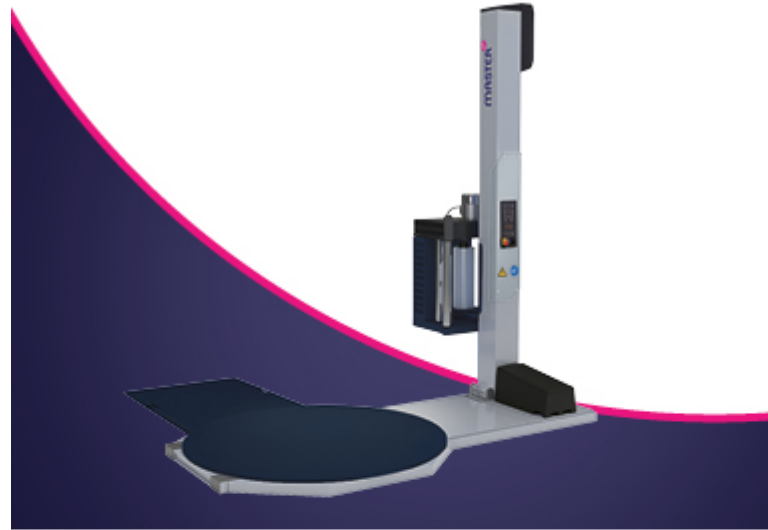
- + Optimal load securing with stretch wrappers for different operational areas
- + For more advanced usage with performance stretch films

Machine	1650 x 2415 x 2720 mm
Column height	2720 mm
Wrapping height	2400 mm
Turntable Ø	1650 mm
Turntable type	closed
Power supply	220/240V (50/60Hz) 1PH // 380/415V (50/60Hz) 3Ph+N
Pallet size	max. 1200 x 1000 x 2400 mm
Pallet weight	max. 2400 kg

To discuss your pallet wrapping needs in more detail, please contact us on:

pkteam@antalis.co.uk  
0370 241 1466

Antalis.co.uk



#### Contact: e-mail address

Contact me:

---

---

---

---

---

